

Accessibility Guide for The Counting House

Contact

Contact for Accessibility Enquiries: Duty Manager

✉ countinghouse.cornhill-events@fullers.co.uk

☎ 020 7283 7123

🌐 www.the-counting-house.com/

At a Glance



Level Access

There is level access to:

- Ramped access is available to the Pub
- A portable ramp is used to access the Hotel



Step only Access

- Mezzanine level dining space
- Some standard bedrooms



Accessible Toilets

- A corner layout accessible toilet is located at the rear of the pub at ground floor level



Accessible Bedrooms

- 2 standard accessible bedrooms are provided at second floor level. Note these are accessed using a small lift car (see details below)



Hearing

- Fire alarm beacons are fitted to accessible hotel rooms
- Vibrating pillow alarm available on request from reception

Accessibility Guide for The Counting House

- Portable hearing loop available at reception



Visual

- Menu reading service

Getting Here

Site Address

The Counting House

50 Cornhill Street

London

EC3V 3PD

Public Transport

- Bank and Monument underground stations are within 275-350metres of the site. The routes between stations and site are set relatively level.
- Bus stop ID76024 (Stop R) is set directly opposite the site. This serves bus routes 25, N25 and N550.

Taxi

- The site is set in central London thus accessible black cab services are widely available

Parking

- The pub does not have its own car park
- The nearest public car park with accessible parking is the NCP London Vintry Exchange car park which is around ½ mile of the site. The standard of the accessible bays here is not verified. Refer to the NCP website for details <https://www.ncp.co.uk/find-a-car-park/car-parks/london-vintry-thames-exchange/>

Accessibility Guide for The Counting House

Arrival

Approach Route

- Entrances to both pub and hotel are accessed straight from the pavement.
- The pavement is around 2.35m wide outside the building and is set relatively level.

Entrances

- The pub entrance has a level threshold with a ramp from street to floor level within the weather lobby. The ramp is set at a gradient of around 1:15 over a length of around 2 metres. It is not fitted with handrails.
- The double doors to the pub entrance achieve a clear width of around 580mm through one leaf. These doors require around 60Newtons of force to pull open. They are not power assisted.



Pub Entrance

- The hotel entrance has a step up from the street of around 105mm. A portable ramp is available. When erected this ramp achieves a gradient of around 1:8.5 and a clear width of 725mm.
- This portable ramp is erected by staff who can be summoned using an intercom mounted to the left hand side of the entrance at 1375mm above ground level. Alternatively assistance can be requested by phoning reception or by enquiring at the bar of the pub during opening hours.

Accessibility Guide for The Counting House

- The double entrance doors achieve a clear width of 720mm through one leaf. They are not power assisted and require around 60Newtons of force to pull open.



Hotel Entrance

- The rear pub entrance achieves a level threshold but there are 4 steps down inside from this entrance level to the main ground floor bar area.
- The double doors achieve a clear width of 615mm through a single leaf and require around 45 Newtons to pull open.

Reception

- The hotel reception is located at 2nd floor level. Thus it is accessed via stairs or a small lift (see below)
- The desk has a low level position
- A portable hearing loop is available at the desk

Getting Around Inside

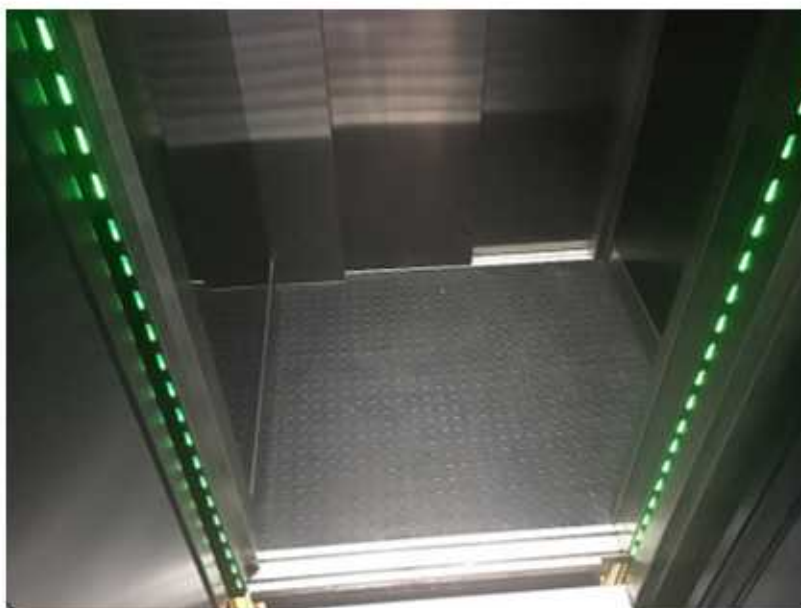
Bar and Dining Areas

- The bar is set at ground floor level with dining areas at mezzanine floor levels
- Bars are set at high level only but table service is available
- Till positions are not fitted with hearing loops
- Lighting levels are relatively low in certain areas reflecting the historic character of the building
- Around 40% of the dining space is set at upper floor level with step only access. An online booking procedure is in place which allows customers to pick their own table.

Accessibility Guide for The Counting House

Lifts

- A lift serving the hotel is located within the hotel entrance/stair lobby.
- The lift doors achieve a clear width of 775mm
- The lift car achieves clear dimensions of 850mm deep by 1035mm wide. Staff will assist users to get in to and out of the lift upon request which can be arranged in advance or upon arrival.
- Lift controls are set within 1200mm of floor level.
- Control buttons have embossed text and braille markings
- Audio announcement of floor level and door opening is not provided.
- The lift provides access to the hotel only. It does not provide level access to the mezzanine dining area.
- This lift provides level access to the accessible bedrooms but does not provide level access to all hotel bedrooms. Please check with the hotel before booking if you require level access to your room.



Lift Car

Accessibility Guide for The Counting House

Stairs

- The hotel stairs are set within the entrance lobby. They are fitted with well contrasted nosings and a single handrail.
- Stairs serving the mezzanine dining level of the pub are set at the front and rear of the main bar area. These are generally fitted with two oversize handrails. Nosings are installed but achieve varying degrees of contrast.

Toilets and Changing Facilities

Accessible Toilets

- The cubicle is located at the rear of the main bar area. The route to the cubicle is via the rear stair lobby.
- The cubicle door achieves a clear width of 835mm
- The cubicle achieves overall dimensions of 2240mm deep by 1510mm wide
- The toilet seat is set around 480mm above floor level
- The cubicle is fitted with a pull cord alarm which sounds in the bar area outside the cubicle.



Accessibility Guide for The Counting House

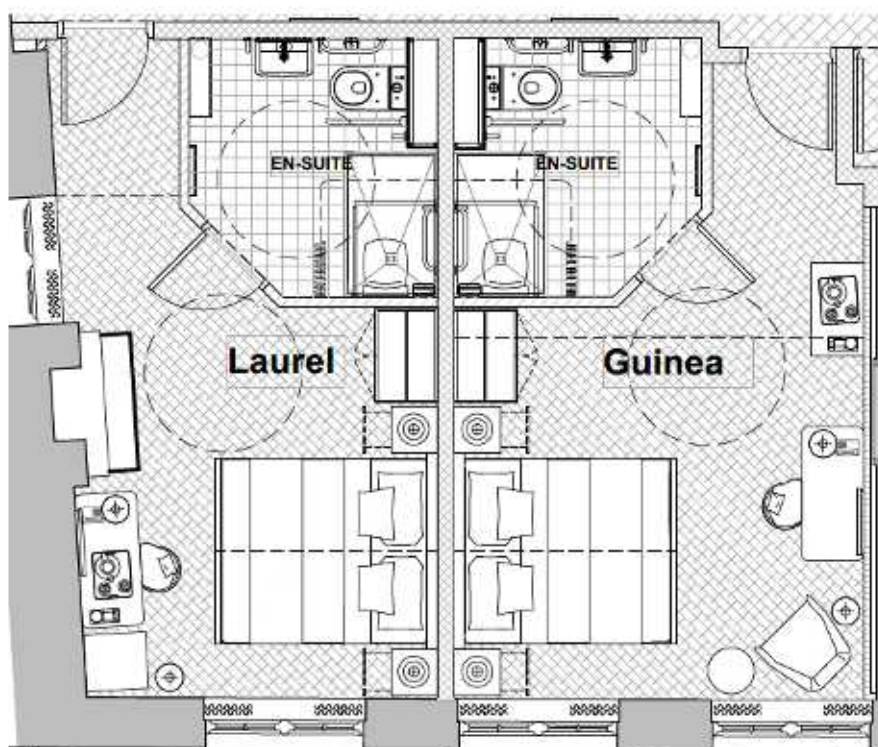
Standard Toilets

- Standard toilets are set at basement level and are accessed by stairs only.

Accessible Accommodation

Accessible Bedrooms generally

- There are two accessible bedrooms set at second floor level. They are positioned within 15 metres of the lift accessed via a corridor achieving a clear width of 1140mm.



- Accessible Bedroom doors achieve a clear width of 850mm.
- Beds are zip and link units so can be set up as double or twin units. Please contact hotel in advance to discuss your requirements.
- Mattresses are set at 700mm above floor level. There is clear space of 190mm beneath the bed base. Bed raisers are not available.
- Both bedrooms and ensuites are fitted with pull cord alarms with cords located to the side of the bed transfer spaces and to the side of the WC pans.
- Window controls are set 1475mm above floor level
- Desks are set around 650mm above floor level with clear knee space beneath of around 595-640mm high by 650mm wide.

Accessibility Guide for The Counting House

- Wardrobes have plinths at their base. Rails are set 1700mm above floor level.
- Ensuite doors achieve a clear width of 855mm.
- Ensuites are laid out as level access shower rooms with a corner layout WC pan.
- Ensuites achieve clear dimensions of around 2465mm deep by 2365mm (max) wide
- WC seats are set around 420mm above floor level
- Shower areas are fitted with fold down shower seats set around 480mm above floor level. These are not fitted with backrests.
- WC pans and shower seats are fitted with grab rails (see photos)



Ensuites

Guinea Accessible Bedroom

- The Guinea bedroom achieves clear dimensions of 3745mm deep by 4030mm wide excluding the ensuite and entrance hallway serving it.
- A transfer space of around 1430mm wide by more than 2000mm deep is available at the side of the bed
- From the end of the bed to the desk there is a clear width of 1290mm.

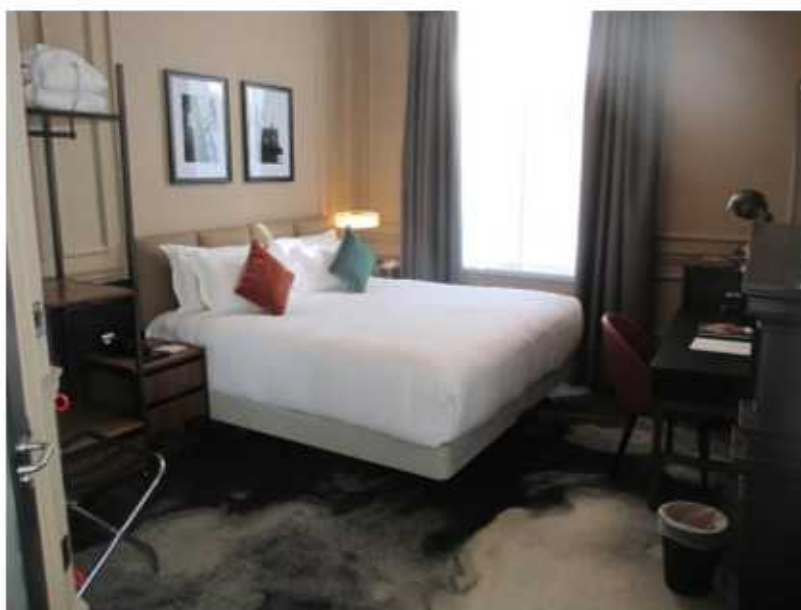
Accessibility Guide for The Counting House



Guinea Bedroom

Laurel Accessible Bedroom

- The Laurel bedroom achieves clear dimensions of 3745mm deep by 4030mm wide excluding the ensuite and entrance hallway serving it.
- A transfer space of around 1415mm wide by more than 2000mm deep is available at the side of the bed
- From the end of the bed to the desk there is a clear width of around 750mm.



Laurel Bedroom

Accessibility Guide for The Counting House

Information

Written Information

- A large print menu is not available at this site
- Braille menus are not available
- Staff are happy to provide a menu reading service upon request

Customer Care & Support

Booking Procedures

- As around 40% of dining tables are accessed by stairs only. An online booking procedure is in place which allows customers to pick their own table. Alternatively please contact us in advance to request a level access table.

Evacuation

- Accessible bedrooms are fitted with alarm beacons as well as sounders. Other areas are covered by sirens only.
- An assisted evacuation plan is in place.
- Refuges are available to the upper floor levels of the hotel. These are fitted with intercoms.
- An evacuation chair is provided. This is stored at reception.

Customer Care and Staff Training

- All staff have received disability awareness and etiquette training and are happy to help with any specific requirements.